

# S. Harris<sup>®</sup>

## G E O T R Y B A L



*A NEW JOURNEY BEGINS...*

# GEO TRYBAL

Seeking textiles that would bring the spirit of the journey inside, we set off to experience the world on a deeper level, to connect...to find our tribe.

A collection of twenty-five stunning patterns crafted from CURIOSITY, **GEO**TRYBAL conditions a certain craving for ADVENTURE; a certain craving to EXPLORE.



(left to right) Batik Tribal - Hunter Jade, Aza - Blue Tan

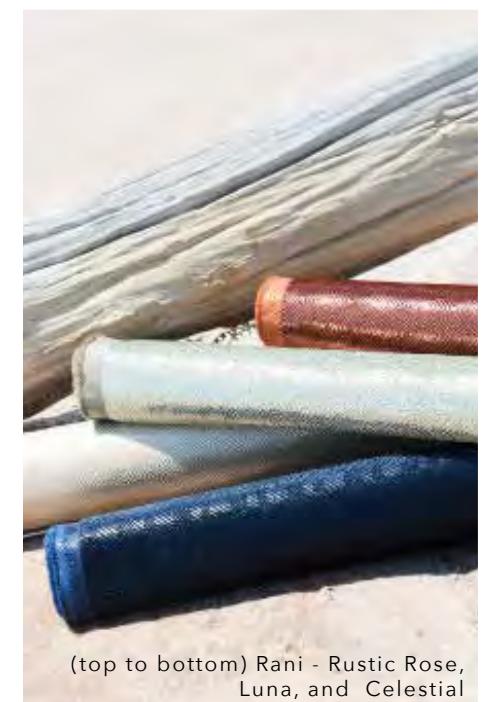


With prints to penetrate the IMAGINATION, hues to haunt the BOLDER side in each of us, **GEO**TRYBAL evokes a sense of WANDERLUST within the walls of your interiors.

(top to bottom) Hmong - Souris, Citron, Platinum, and Terra Cotta



(top to bottom) Rani - Rustic Rose, Luna, and Celestial



Sangha - Dune Onyx



Maori - Denim Wash

*it is home that will call you back*



(Chair) Besa - Soaprock  
(Floor) Mirabai Modern - Noir



Trybal Sheer - Goldstone

*we saw a lot...  
the world wore color like never before. the land was lit at every square inch for the long days of summer, and even when it faded into the final hours of the night, we could still see the signs that told us to*

*With whispers of Diana Vreeland's message, "the eye has to travel," we wandered around foreign cities and further into the escape away from the ordinary, wondering how to capture the essence of exploration, or at least a small piece of the scenery and keep it forever,*

*because though the eye does have to travel,  
it also has to rest.*

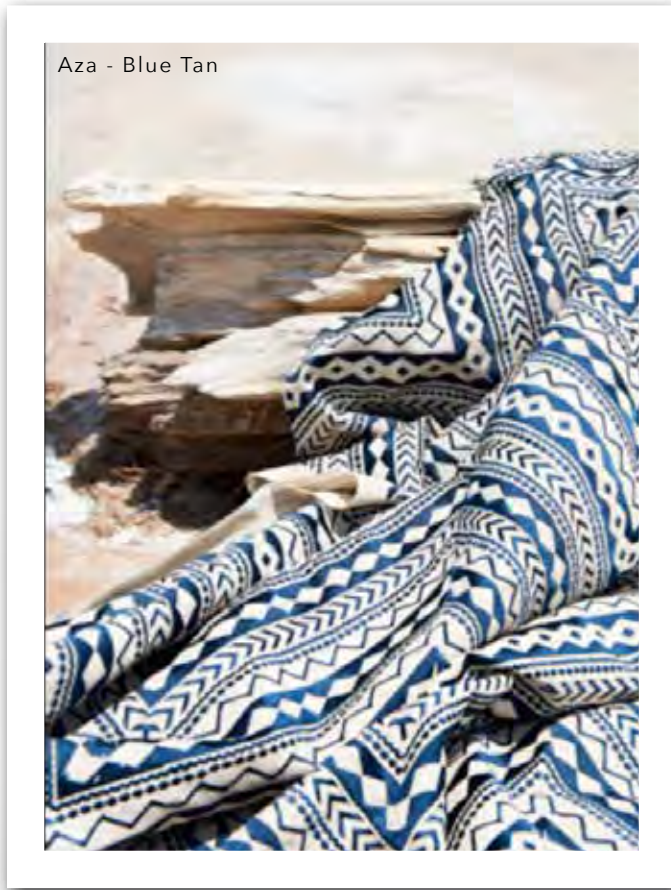
The world wore color like never before...

and we captured it all...  
to bring the *spirit*  
of the *journey*  
**INSIDE.**

# GEO TRYBAL

GIVES FABRIC A NEW ROLE

In which it blends *there* with *here*...  
to perpetuate the desire to evolve;  
to thread together *tales of the past*  
with the *dreams* still waiting on  
their turn to unfold.



(left to right) Rani - Oro, Sangha - Moroccan,  
Pashtun - Rockland, Sangha - Dune Onyx,  
Hmong - Citron

IT'S YOUR TURN TO TELL  
*the story...*



# S. Harris®

## GEOTRYBAL



Aja - Black on White  
available in 3 colorways



Alasha - Spice  
available in 4 colorways



Alii - Dune  
available in 4 colorways



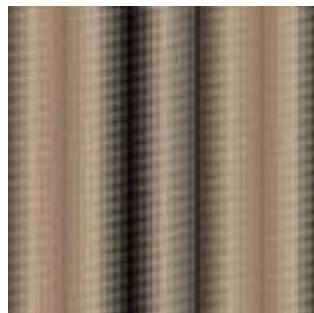
Aza - Blue Tan  
available in 5 colorways



Batari - Hawk  
available in 2 colorways



Batik Tribal - Hunter Jade  
available in 4 colorways



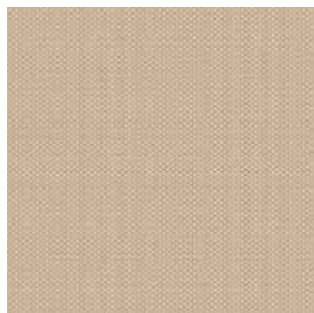
Bedouin Cloth - Neutrality  
available in 2 colorways



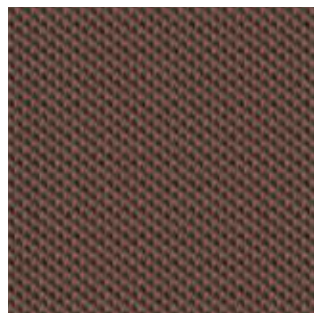
Besa - Soaprock  
available in 5 colorways



Cuyana - Vin  
available in 5 colorways



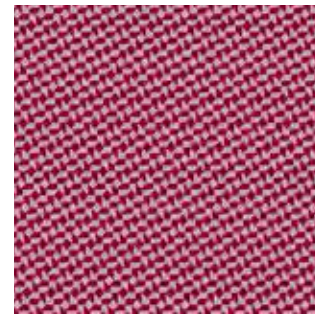
Genesee - White Gold  
available in 2 colorways



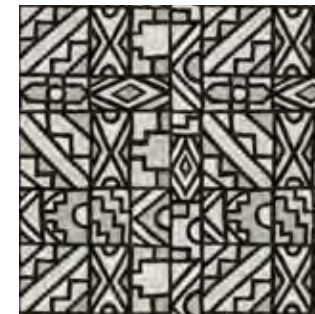
Gusti - Mocha Peach  
available in 5 colorways



Hasina - Lavender Sky  
available in 3 colorways



Hmong - Fuchsia  
available in 6 colorways



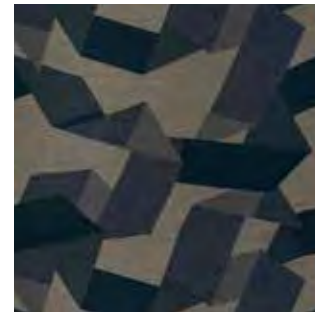
Honovi - Onyx Pearl  
available in 3 colorways



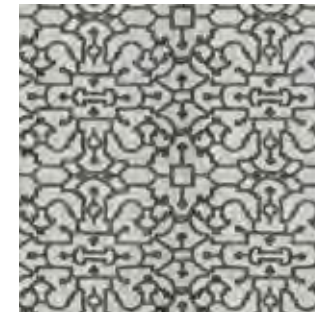
Kabalarian - Plumgrass  
available in 6 colorways



Maasai - Sandstone  
available in 3 colorways



Maori - Denim Wash  
available in 3 colorways



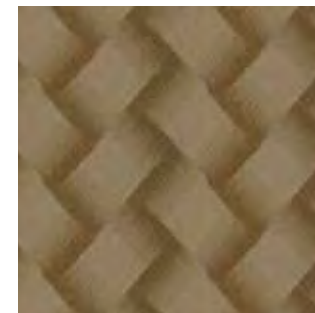
Mirabai Modern - Noir  
available in 4 colorways



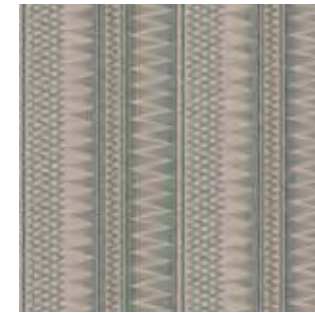
Pashtun - Rockland  
available in 4 colorways



Rani - Rustic Rose  
available in 6 colorways



Samma - Brass Root  
available in 6 colorways



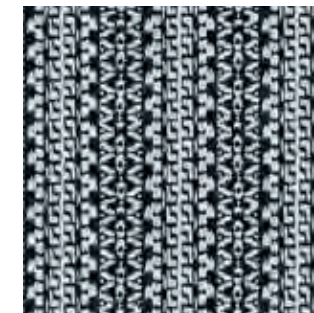
Sangha - Enchanted  
available in 4 colorways



Thoth - Beige  
available in 2 colorways



Trybal Sheer - Goldstone  
available in 2 colorways



Zola - Noir  
available in 4 colorways

VISIT OUR WEBSITE TO VIEW MORE COLORWAYS

[www.sharris.com](http://www.sharris.com)

[www.sharris.com](http://www.sharris.com)